



After connecting this extension panel, the speed controller will be set automatically to 'Advanced Smart Analog' configuration. For more information about using the speed controller in this configuration see the AN-1/SAC manual. The package contains everything you need to mount and connect the unit: nut and washers; knob for potentiometer; a red cap for pushbutton and a 10cm (about 4 inches) long ribbon cable fitted with two 5 pin connectors.

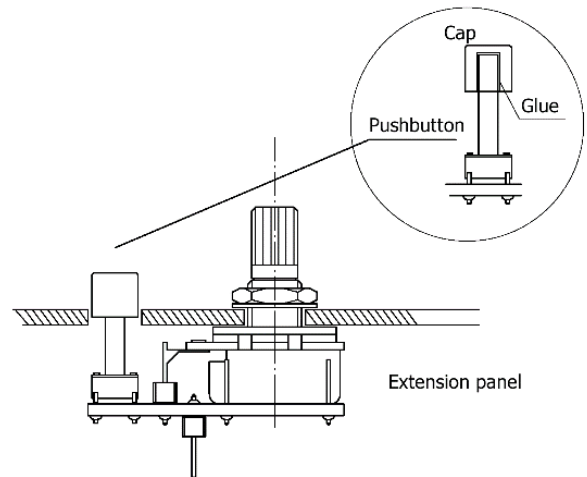
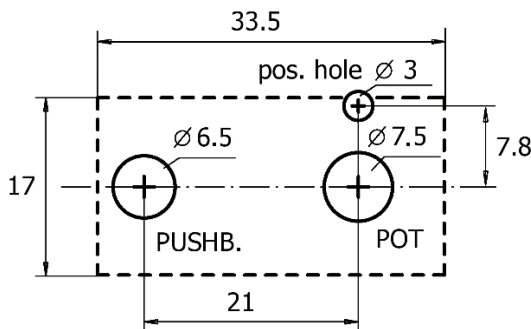


**IMPORTANT NOTICE:**

Please note that the unit must be properly mounted for correct operation. Do not bend the pushbutton's shaft sideways because it may break out!

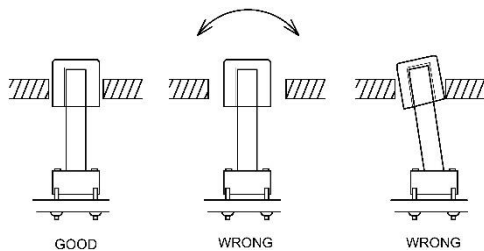
**1. Mounting.**

The figure below shows the simplest way to mount the unit. Drill holes in the front panel according to the template provided. Mount the unit from behind the front panel, and attach with the provided nut. Finally attach the potentiometer knob and the pushbutton cap. Use glue (not included) to secure the pushbutton cap. Before installing the extension panel, note that the length of the connecting ribbon cable is 10 cm (~4inches).



Dimensions on the above figure are in millimeters.

The positioning hole (pos. hole) is very important to prevent rotation of the panel. If the panel rotates, the button shaft may break out or it can cause a false pressed state.



The correct size and position of pushbutton hole is important for flawless operation.

**2. Connection**

Switch off the AN-1/SAC unit. Remove the jumper from the controller panel's pins (if it is attached). Connect one connector of the included ribbon cable to the extension panel's pins and the other connector to the AN-1/SAC panel's pins. The connection will be correct if the red marks on the connectors are on the same side as the red marks on the panels. Reverse connection will cause malfunctions, but it cannot cause damage. The Advanced Smart Analog configuration will be set the first time after the device is switched on.

**3. How to use it**

The potentiometer is used to adjust the acceleration and braking intensity in automatic start/stop mode. The train can be stopped at any time immediately by pressing the pushbutton. The red light will blink rapidly if the pushbutton is pressed. For more information see the AN-1/SAC manual.